

COMPANY PROFILE



Office address: Nakshi Tower, House – 26/3, Level-2, Road -2, Block-B, Section-12, Mirpur, Dhaka-1216.

E-mail address: nsbc.bd@gmail.com; Web: www.nakshi-bd.com.

Help Line: +88-02-55071919, 01761-745082, 01832-862557

CONTENT

<u>Art. No.</u>	<u>Name of Topic</u>	<u>Page No.</u>
1	About the Company	3
2	Vision	3
3	Mission	3
4	Scope of Activity	4
5	List of working Equipment's	6
6	Material Specification	7
7	List of Technical Personnel	8
8	Our Valued Clients	9
9	List of Completed & Ongoing Projects	10
10	A Glimpse of our Projects	12

1. About the Company

NAKSHI STEEL BUILDING LIMITED (NSBL) is formed to set a new dimension in the construction and consultancy practice in Bangladesh. Consideration of environmental concern, experimentation of recent ideas and sustainable development are integral parts of NAKSHI STEEL BUILDING LIMITED (NSBL)'s approach to projects from inception to completion.

NAKSHI STEEL BUILDING LIMITED (NSBL) can provide all the necessary services to take a project from initial feasibility study to implementation through project management, detailed architectural drawings, structural design and drawings, construction supervision, procurement assistance, commissioning and finally operation and maintenance. We can also provide each of these services individually or furnish them in a combination to meet a specific set of needs. We are committed to give better services within the given time schedule.

NAKSHI STEEL BUILDING LIMITED (NSBL) is to serve the nation and act for the welfare of the society. A good consultancy/construction company is one whose activities should involve in improving the socio-economic condition of people. Therefore, it is imperative to flourish into a good consultancy/construction company to build up a nation of sound socio-economic infrastructure. To fulfill this commitment our motto is *"To build the World, To construct the Future"*.

2. Vision

To be the leader in pre-engineered steel building products in Bangladesh and upgrade the industry through our state-of-the-art technology, superior quality, and support services.

3. Mission

- To work with enthusiasm and utmost sincerity for client satisfaction.
- To provide technologically superior products and highly competitive price to the clients;
- To design, fabricate and erect steel structures of any kind for growth and development in a shortest possible time without compromising the quality and aesthetic beauty of the project.
- To maintain all standard codes of steel structure and look into innovation to develop the most effective solutions.
- To encourage overall development of our employees by integrating their safety, health and happiness to make them more efficient and effective through continued training.

4. Scope of Activity

The firm initially concentrated on architectural and engineering projects relating to living environment along with utilities and services. But soon its activities expanded over varieties of fields covering residential, industrial, commercial and institutional buildings with complete design of plumbing systems including electrical wiring, water supply, sanitation, external utilities etc.

NAKSHI STEEL BUILDING LIMITED (NSBL) is primarily an architectural, structural, steel construction, oriented firm with in-house engineering services. Rational identification of problems related to spatial needs and developments of solutions to them, a team approach by experts from different disciplines. Our approach to design and its implementation is consistently oriented towards innovation, exploring the appropriate use of technology and materials for given context and client requirements. At the same time cost limits in all our works, are strictly observed.

The main areas of operation of the firm are listed in detail below:

(i) PLANNING

- ✓ Land use planning.
- ✓ Physical planning.
- ✓ Landscape planning.
- ✓ Planning surveys.
- ✓ Preparation of maps, master plan and site plan etc.
- ✓ Integrated rural development as BNBC, ACI and Standard code.

(ii) ARCHITECTURAL

- ✓ Site Survey.
- ✓ Discussion and review of building programmer.
- ✓ Establishment of physical requirement and fixation of design criteria.
- ✓ Establishing design perimeter in line with Bangladesh Government Construction Act and design regulation and code.
- ✓ Feasibility Study of building project.
- ✓ All types of Design & Development (as per RAJUK, BNBC, ACI and Standard code)
- ✓ Interior Design
- ✓ Graphic Design
- ✓ Dimensional (3D) Modeling and Animation
- ✓ Design and selection of furniture, furnishings color scheme and selection of artwork.

(iii) LANDSCAPE DESIGN

- ✓ Landscape design and garden
- ✓ Plantation
- ✓ Ground Coverage

(iv) SOIL INVESTIGATION

- ✓ Soil Investigation
- ✓ Identification of Soil Improvement
- ✓ Pile Load Test
- ✓ Pile Integrity Test (PIT)
- ✓ Electronic Cone Penetration TEST (ECPT)

(v) CONSTRUCTIONS AREA

- ✓ All types of Pre-fabricated Steel Structure (Industrial, Commercial, Residential, Foot and Over Bridge)
- ✓ All types of R.C.C Building (Residential, Commercial and Industrial Building).
- ✓ Bridge, Culvert and Road Construction work.

5. BOARD OF DIRECTORS

1. Engr. Md. Rashedul Hasan, M.Sc. Engg, PEngg, LEED AP, USA, Director, Technical.
2. Md. Khairul Anam, B.Sc. in CSE, JU, Director, Business Development.
3. Engr. Md. Anisur Rahman, M.Sc. Engg, (Structural), BUET, Director, Technical.

6. LIST OF TECHNICAL PERSONNEL

6.1 Architects:

	<u>Name</u>	<u>Qualification</u>	<u>Designation</u>	<u>Experiences</u>
1	Ar. Omar Sharif	B. Architect. BUET	Principal Architect	18y
2	Mr. Monirul Islam	Diploma in Interior Design	Interior Designer	9y
3	Mst. Mahfuza Khatun	Dip in Architecture	Sr. Architect	7y
4	Mst. Sahana Akter	Dip in Architecture	Jr. Architect	4y

6.2 Civil & Structural Engineers:

	<u>Name</u>	<u>Qualification</u>	<u>Designation</u>	<u>Experiences</u>
1.	Engr. Md. Ebadur Rahman	B.Sc. Engg., RUET	Senior Structural Engineer	28y
2.	Engr. Alam Hye Al Meher	B.Sc. Engg., KUET	Senior Structural Engineer	27y
3.	Md. Anisur Rahman	M.Sc. Engg., BUET	Senior Structural Engineer	19y
4.	Engr. Sayed Asif Iqbal	B.Sc. in Civil Engg. BUET	Structural Engineer	15y
5.	Md. Imtiaz Ahmed	B.Sc. Engg, MIST	Structural Engineer	2y
6.	Tasaddik Khan	B.Sc. in Civil Engg. RUET	Assistant Engineer	3y
7.	Md. Monirul Islam	B.Sc. Engg, SUB	Asst. Engineer	8y
8.	Sagor Kumer Saha	Dip in Civil Engg.	Fabrication Engineer	6y
9.	Md. Ramjan Ali	Dip in Civil	Cad Operator	2y
10.	Md. Sohel Rana	Dip in Civil Engg.	Site Engineer	5y

6.3 Electrical Engineers

	<u>Name</u>	<u>Qualification</u>	<u>Designation</u>	<u>Experiences</u>
1	Md. Nazrul Islam	B.Sc. Engg.	Sr. Design Engineer	17y
2	Mr. Mizanur Rahman	B.Sc. in Engg.	Sr. Engineer	15y
3	Md. Naser Mamun	B.sc. in Engg.	Assistant Engineer	07y
3	Md. Niaz Hossain	Diploma	Site Engineer	11y
4	Md. Alauddin	H.S.C	Supervisor	20y
5	Md. Badol Mia	S.S.C	Supervisor	15y

6.4 Mechanical/Plumbing Engineers

	<u>Name</u>	<u>Qualification</u>	<u>Designation</u>	<u>Experiences</u>
1	Md. Abul Monsur	B.Sc. Engg .	Principal Mechanical/Plumbing	25y
2	Md. Abu Taher	S.S.C	Supervisor	12y
3	Md. Mridul Hossain	S.S.C	Supervisor	10y
4	Md. Juwel Ahsan	B.A	Supervisor	8y

6.5 Accounts office

	<u>Name</u>	<u>Qualification</u>	<u>Designation</u>	<u>Experiences</u>
1	Md. Rassel Imran	M.Sc, RU	Chief Account officer	18y
2	Uttam Kumar Paul	B.A	Project Manager	15y
3	Md. Hafizur Rahman	H.S.C	Co-ordinator	7y

7. LIST OF VALUED CLIENTS

	<u>Name of Company</u>	<u>Scope of Work</u>
1	Square Pharmaceuticals Ltd	Construction and floor epoxy
2	SK+F Pharmaceuticals Ltd	Construction and floor epoxy
3	Incepta Pharmaceuticals Ltd	Steel Construction
4	Kumudini Hospital, Kumudini Trust	Composite Construction
5	JAICA	Pre-fabricated Steel Structure
6	Kazi Farms Ltd.	Pre-fabricated Steel Structure
7	Daffodil International University	Composite Construction
8	Bangladesh University of Business & Technology	Composite Construction
9	TM Textiles & Garments Ltd	Steel retrofitting work, By ACCORD
10	DK. Knitwear Ltd, DK Group.	Steel Retrofitting work
11	Korash Knitwear Ltd	Pre-fabricated Steel Structure
12	Bangladesh Police	Pre-fabricated Steel Structure
13	Partex Builders Ltd	R.C.C Construction
14	Panna group	Pre-fabricated Steel Structure
15	Diran group	Pre-fabricated Steel Structure
16	Japan Taguchi Construction Co. Ltd.	Pre-fabricated Steel Structure
17	Ion-Exchange (BD) Ltd	Waste water treatment
18	Saka International Ltd	Epoxy and Floor Development
19	Volvo Battery Ltd	Pre-fabricated Steel Structure
20	Build Link Bangladesh	Pre-fabricated Steel Structure
21	Kazi Farms Group	Pre-fabricated Steel Structure
22	Bangladesh Police	Pre-fabricated Steel Structure
23	Amin Corporation.	Pre-fabricated Steel Structure
24	Chapel Cum Migrant Center	Pre-fabricated Steel Structure
25	Electrolink Bangladesh	Pre-fabricated Steel Structure

26	Amin Corporation Ltd	Pre-fabricated Steel Structure
27	Jamuna foils Ltd	Pre-fabricated Steel Structure
28	N.N Builders Ltd	Pre-fabricated Steel Structure
29	APR Energy, USA	Pre-fabricated Steel Structure
30	Agro Star Ltd	Pre-fabricated Steel Structure
31	Shapno Feed Industry Ltd	Pre-fabricated Steel Structure

8. LIST OF COMPLETED PROJECTS

Name of Project		Description of Work	Status
1.	Construction of 350 MW Diesel Power Plant, (Client- APR Energy, USA; NN Builders) at Pangaon, Keranigong, Dhaka.	5- Nos (37000 Sft) Pre-fabricated steel shed with Supporting Structure of Switch Yard.	Completed
2.	Retrofitting work of Column, Mezzanine Beams and Rafters for the factory of TMBD. (Supervised by ACCORD), at Habirbari, Kashor, Bhaluka, Mymensingh	4-Nos (5,50,000 sft) Pre-fabricated steel shed	Completed
3.	Retrofitting Work for DK Knitwear Ltd under RMG sector safe working environment Program (Earthquake resistance Steel frame bracing). Supervised by JAICA, at Jamgara, Ashulia.	Retrofitting Work of Steel frame bracing	Completed
4	Construction of factory Building for Japan Taguch Construction Co. Ltd, at Belma, Ashulia, Savar.	2-storied (40,000 Sft) Pre-fabricated steel Building	Completed
5.	Construction of factory Building for Diran Pole Industry Ltd, at Sonatola, Kaliakor, Gazipur.	3 Nos-(20,000 Sft) Pre-fabricated Shed with Mezzanine Floor.	Completed
6.	Construction of Kazi Organic Fertilizer Ltd, at Modhupur, Tangail.	25,000 Sft –Pre-fabricated Steel mezzanine floor with Shed	Completed
7.	Construction of Shoot house, Multipurpose Shed and Swimming pool for Bangladesh Police at Mohera, Tangail.	20,000 Sft, 25,000 Sft and 8,000 Sft Pre-fabricated Steel Shed	Completed
8.	Construction of Pre-fabricated Steel Shed for Amin Corporation at Abdullahpur, Beribadh, Keraniganj.	(12,250.0 Sft) Pre-fabricated Shed with Mezzanine Floor.	Completed
9.	Construction of 5-Storied Hospital Building for Bangladesh Police at Central Police Hospital,	54680.0Sft Pre-fabricated Steel Building	Completed
10.	Construction of Pre-fabricated Steel Factory Building of Jamuna Foils Ltd, at Vatarkhola, Naogaon Bazar, Dhamrai, Dhaka.	R.C.C and Pre-fabricated Steel Work	Completed
11.	Construction of 7-Storied Hospital Building for Bangladesh police at Central Police hospital, Rajarbagh, Dhaka.	95000 Sft Pre-fabricated steel Building	Completed
12.	Construction of Connection Bridge between the newly constructed 6-storied Pre-fabricated Steel Structure Building & the Utility Building at Central Police Hospital, Rajarbagh, Dhaka.	8 Nos. Pre-fabricated steel Bridge	Completed
13	Construction of 4-Storied Pre-fabricated steel Building for Agro Star Ltd, at Tulshikhali, Keranigang.	35000 Sft Pre-fabricated steel Building	Completed
14	Construction of 5-Storied Pre-fabricated steel Building with Shed Shapno Feed Industries Ltd, at Ramdi, Kulierchar, Kishoreganj.	50000 Sft Pre-fabricated steel Building and shed	Completed
15	Construction of In-Service Police Training Center at Gaibandha.	Pre-fabricated steel Building	Completed

16	Construction of 14m X 4m pre-fabricated steel Footover Bridge for Central Police Hospital, at Rajarbagh, Dhaka	Pre-fabricated steel Bridge	Completed
17	Construction of Pre-fabricated Steel 3-Storied Exterior building, RAB-Headquarter, Uttara, Dhaka.	Pre-fabricated steel Building (Sub-Contract)	Completed
18	Construction of In-Service Police Training Center at Rajshahi.	Pre-fabricated steel Building	Completed

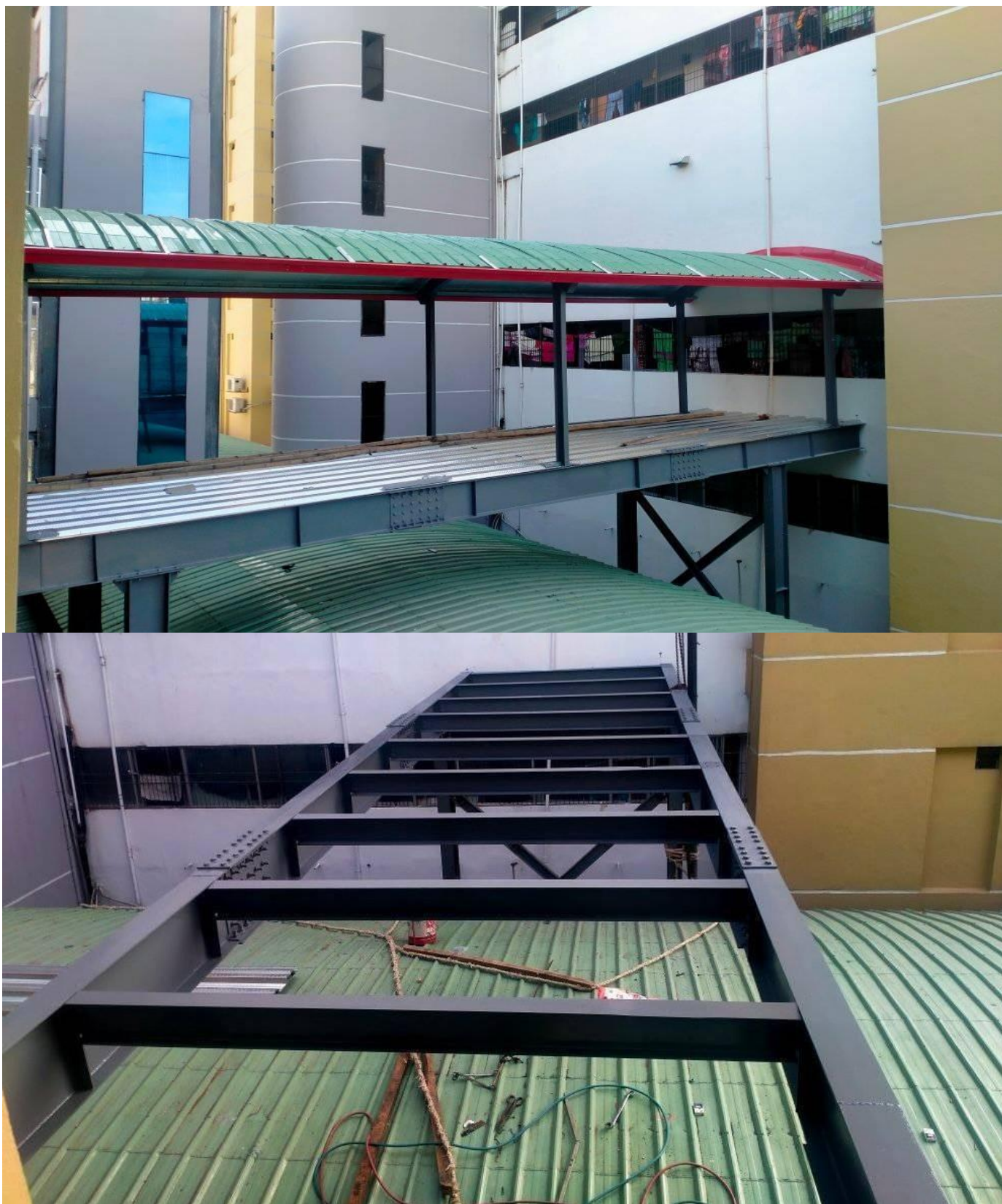
9. LIST OF ONGOING PROJECTS

Name of Project		Description of work	Status
01	Extension and Renovation of Existing Footover Bridge at 22nd (P) Km (Nabinagar Bus Stand) of Dhaka-Aricha National Highway (N-5) Under Dhaka Road Division	Pre-fabricated steel Footover Bridge	On Going
02	Extension & Renovation of Existing Footover Bridge at 16th (P) km (Savar New Market) Dhaka-Aricha National Highway (N-5) under Dhaka Road Division	Pre-fabricated steel Footover Bridge	On Going
03	Construction of 3-Storied Lift Core including Supply, Installation, Testing and commissioning of 6-Passenger lift for Tongi Sub-Divisional office at Tongi, Gazipur.	Lift Core	On Going
04	Construction of In-Service Police Training Center at Kushtia.	Pre-fabricated steel Building	On Going
05	Construction of In-Service Police Training Center at Jhenaidah.	Pre-fabricated steel Building	On Going
06	Construction of 350ft X 12ft pre-fabricated steel Walk way for Central Police Hospital, at Rajarbagh, Dhaka	Pre-fabricated steel Walk way	On Going

10. A GLIMPSE OF OUR PROJECTS



Pre-fabricated Raw Materials & Finished Goods warehouse Shad at Tatarkanda, Ramdi, Kulierchar, Kishoreganj. Shapno Feed Industries Ltd.



Pre-fabricated steel Footover Bridge for Central Police Hospital, at Rajarbagh, Dhaka



5-Storied (Total Height-105ft) of Pre-fabricated Machine Tower at Tatarkanda, Ramdi, Kulierchar, Kishoreganj. Shapno Feed Industries Ltd.



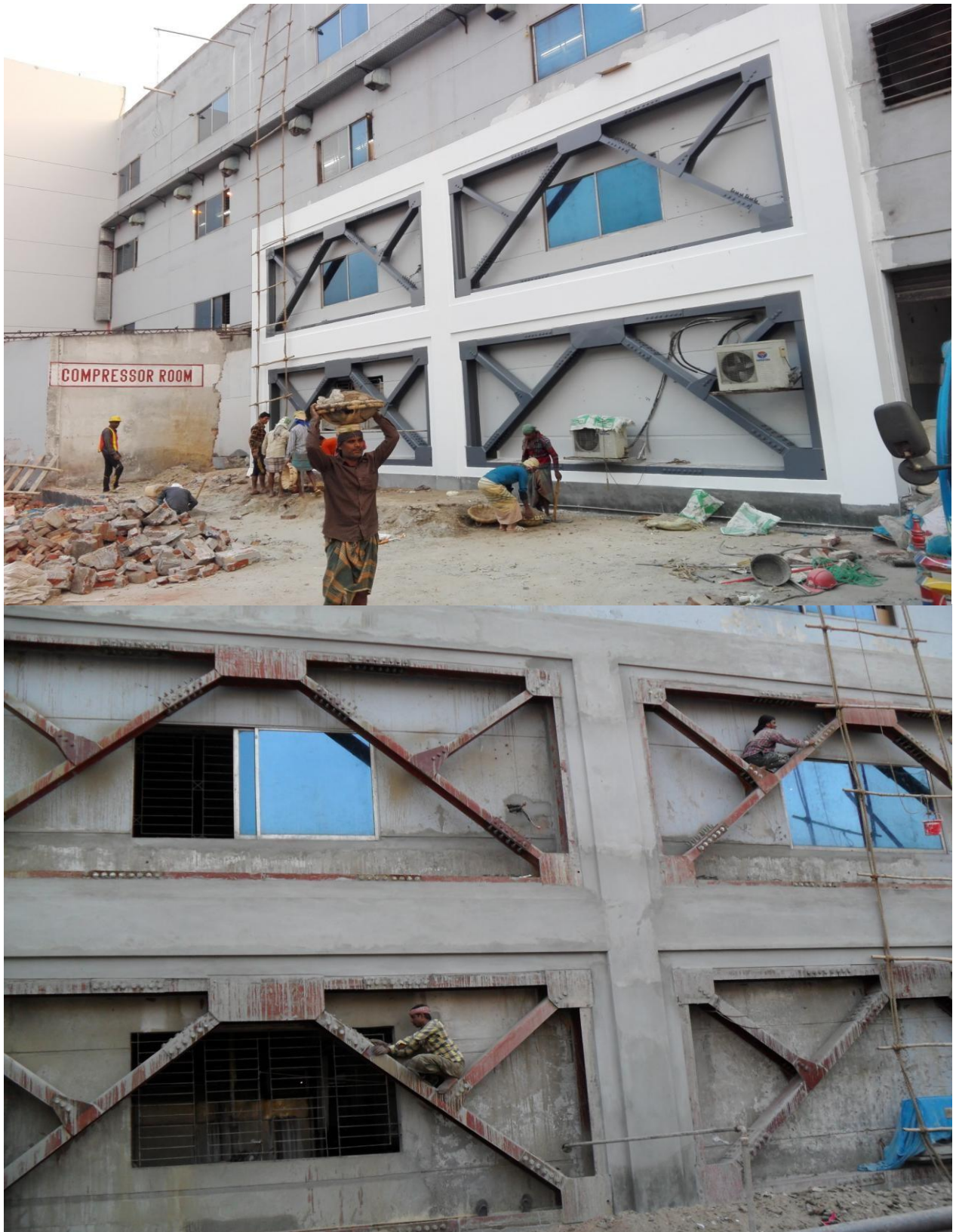
7-Storeyed (95000 Sft) Pre-fabricated Steel Hospital Building at Central Police Hospital, Rajarbagh, Dhaka.



7-Storeyed (95000 Sft) Pre-fabricated Steel Hospital Building at Police Central Hospital, Rajarbagh, Dhaka.



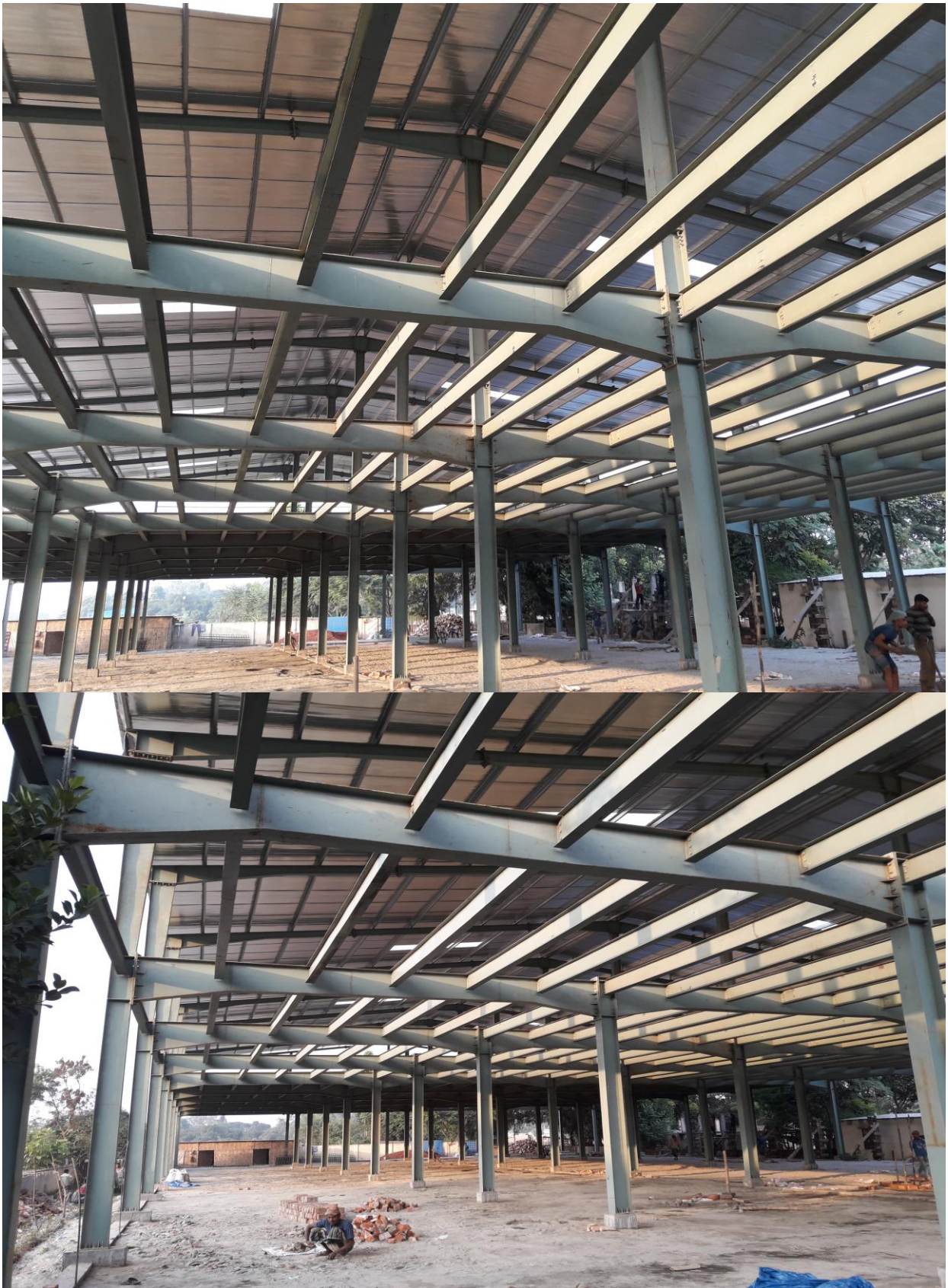
5-Storied (55000 Sft) Pre-fabricated Steel Hospital Building at PCH, Rajarbagh, Dhaka.



Steel retrofitting Work (Steel frame bracing) of 4-Storied R.C.C Building.
Client: DK Knitwear Ltd. Supervised and Approval By: JAICA (Under RMG sector safe working environment Program.)



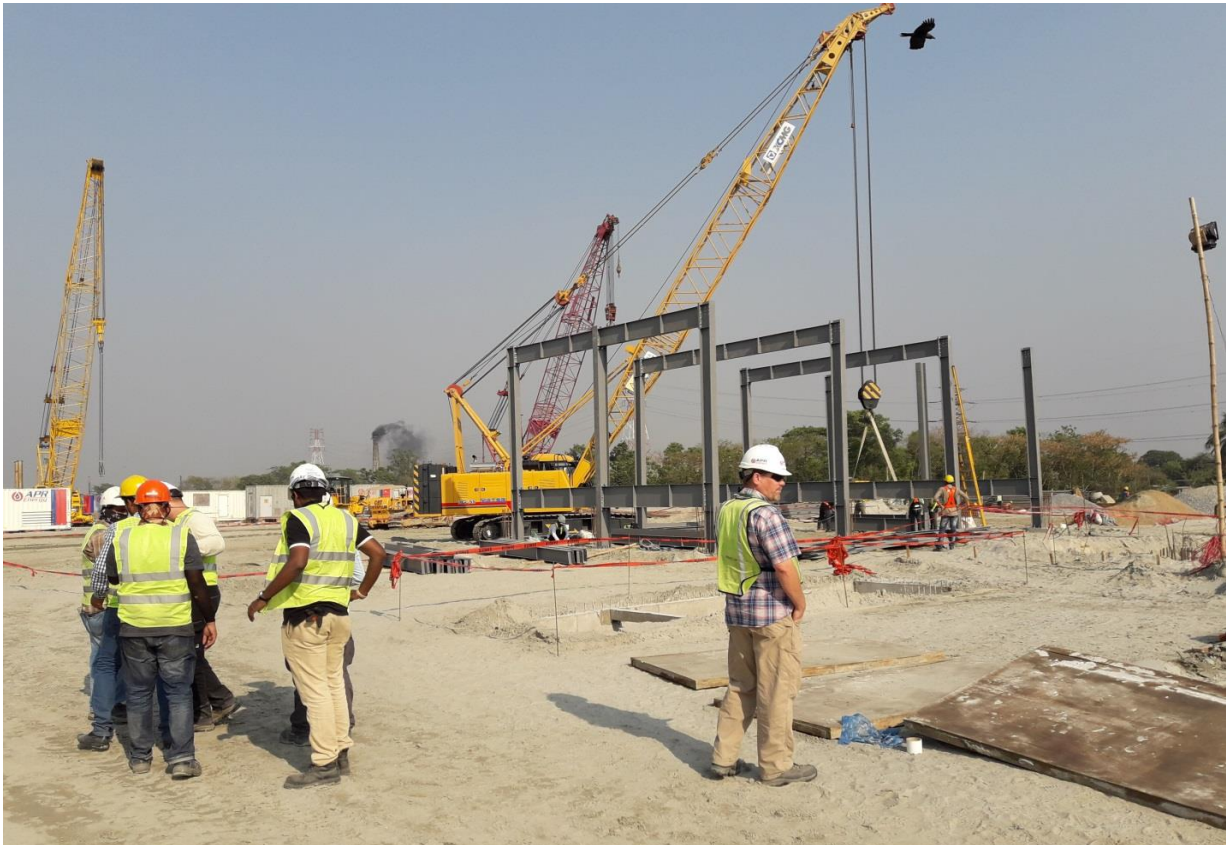
Retrofitting work of 4-Steel Shed (Sewing, Dyeing, Knitting and Water house)
Client: TM Textiles & Garments Ltd, Bhaluka, Mymensingh.
Supervised and Approval By: ACCORD



2-storied steel Factory Building at Belma, Ashulia, Savar.
Client: Japan Taguch Construction Co. Ltd.



Pre-fabricated steel Swimming pool at Mohera Police Training Center, Mirzapur, Tangail.



5-Nos Pre-fabricated steel shed/Building for 300MW Diesel Power plant, APR-USA, Pangaow, Keraniganj, Dhaka.



Amin Printing Pre-fabricated steel factory Building at Abdullahpur, Keraniganj, Dhaka.
Client: Amin Corporation.



Pre-fabricated Steel Factory Building of Jamuna Foils Ltd, at Vatarikhola, Naogaon Bazar, Dhamrai, Dhaka.